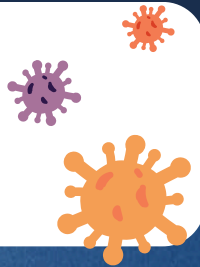




IMPACT OF COVID-19 ON DENTAL PATIENT TRENDS AT PRIVATE UNIVERSITY

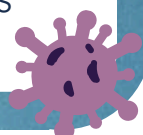
BACKGROUND AND OBJECTIVE

COVID-19, which emerged in late 2019, profoundly affected dental care worldwide, transforming services, education, and safety protocols. Patient attitudes and financial circumstances also changed. This study investigated the lasting impact of COVID-19 on dental health behaviors at Thailand's oldest private dental school by analyzing data from **12,052** patients regarding demographics and treatment needs from **2018 to 2023**.



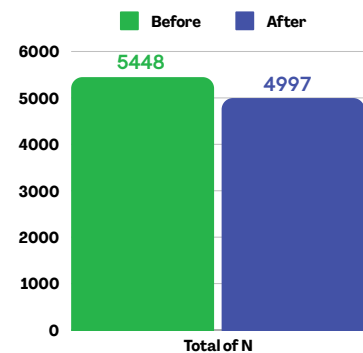
METHODOLOGY AND DATA ANALYSIS

The patient log from January 2018 to December 2023 anonymizes personal data per PDPA. The research team used a double-blind methodology to analyze this data over 72 months, before and after the COVID-19 pandemic, excluding 8 months of WHO dental precautions and 10 months of lockdown. Demographic details and treatment needs analyzed with descriptive and inferential statistics provide insights into pre- and post-COVID comparisons (IBM SPSS Statistics, Version 28.0)

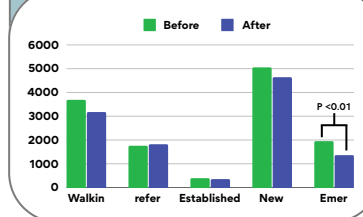


RESULTS AND CONCLUSION

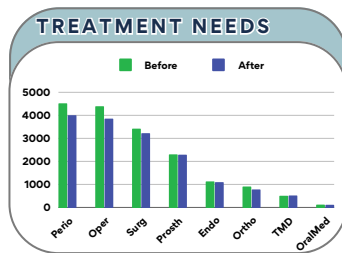
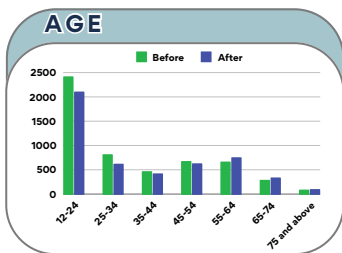
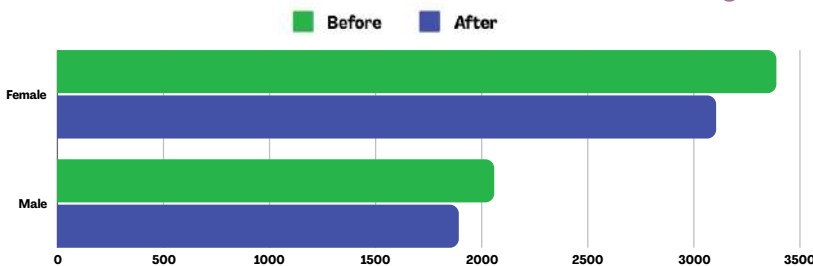
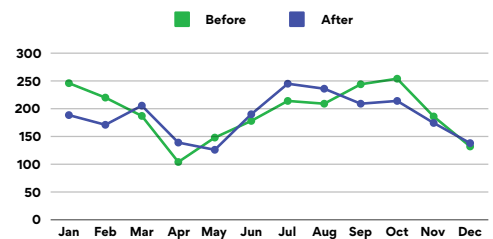
TOTAL DATA



TYPES OF PATIENTS



MONTHLY TRENDS



Data showed that patient information remained constant, except for a **significant decline in emergency dental cases** after COVID-19. This change suggests slight shifts in patient behavior, possibly due to a focus on routine care, altered attitudes toward dental care, or economic constraints. These insights can help build a more resilient dental healthcare system.

Keywords: COVID-19, Dental education, Dental patient behavior



Dr. Sariya N. (Advisor)



Dr. Ittiset D. (Co-advisor)



Kanyawat W.



Napapat S.



Nuttanit S.



Phongboon H.



Pijyasuda P.